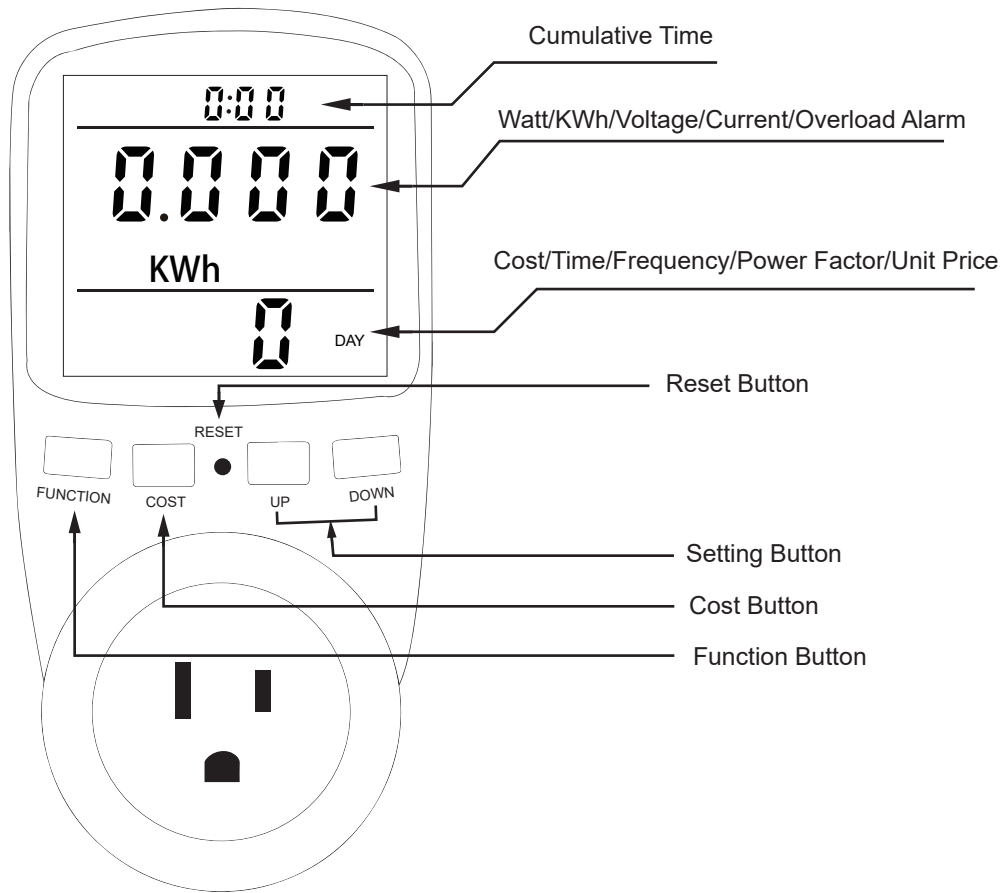


KUMAN Power Meter KW47

User Manual

Energy monitors are a gateway to the inner energy workings of your home. Kuman energy usage monitor KW47 helps you to keep track how much energy your appliance is using and to provide information about how you can make your home more energy efficient.



Specifications

Operating voltage: AC 120V	Wattage display: 0W-9999W
Operating Frequency: 60Hz	Voltage display range: 0V-9999V
Wide voltage range: 110V-130V	Frequency display: 0Hz-9999Hz
Operating current: 15A Max	Current display: 0.0A---15.0A
Timing display range: 0 second---9999 days	Cost display range: 0.000cost/kWh---99.99cost/kWh
Measurement accuracy: $\pm 2\%$	Total kWh and cost display: 0.000---999kWh, 0.000---9999cost

Note

- The monitor has a built-in rechargeable battery. For the first-time using, please plug in the power supply to charge.
- When you meet problems of no displaying or no-functioning buttons, please “RESET” the monitor to test.
- When you press the “RESET” button, all the previous data will be cleared.

Get Start on Using This Power Monitor

1. Step 1: Make sure the wattage of the device connecting with this monitor is under 1800W, then connect the device;
2. Step 2: Setting the Unit Price of the Electricity.
 - ① Long press the “COST” button to get into the unit price setting;
 - ② Press the “FUNCTION” button to choose the setting position;
 - ③ Press the “+”“-” Setting button to choose number from 0 to 9;
 - ④ Press the “COST” button to confirm the price and exit price setting.

Overload Alarm

When the current exceeds 16A or the power exceeds 3680W, the “overload alarm” icon flashes.

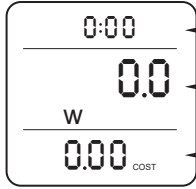
7 Modes on Display

This energy monitor will be auto gets into Mode 1 when you reset this monitor.
To change to other modes, please press "Function" button.

Time 00:00 Number Displaying Explanation

For the first 0~60 minutes (00:00) : The 2 figures on the left mean "minutes", 2 figures on the right mean "seconds".
After 60 minutes (00:00) : The 2 figures on the left mean "hours", 2 figures on the right mean "minutes".

Mode 1: Time/ Watt/ Cost



Cumulative Time
Watt
Cost

Cumulative Time: How long you have monitored the device (Shows Hours, Minutes, Seconds)
Watt: Real-time current Watt of your device
Cost: How much have you costed (based on the unit price you set)

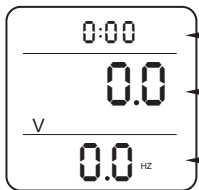
Mode 2: Time/ Cumulative Electrical Quantity Display/ Time



Cumulative Time
KWh
Day

Cumulative Time: How long you have monitored the device (Shows Hours, Minutes, Seconds)
KWh: Cumulative Electrical Quantity
Day: How many days you have monitored the device (in Days)

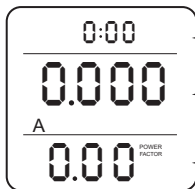
Mode 3: Time/ Voltage/ Frequency



Cumulative Time
Voltage
Frequency

Cumulative Time: How long you have monitored the device (Shows Hours, Minutes, Seconds)
Voltage: Real-time current Voltage of your device
Frequency: AC frequency of the grid (in hertz)

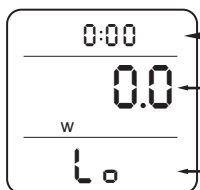
Mode 4: Time/Current/Power Factor



Cumulative Time
Current
Power Factor

Cumulative Time: How long you have monitored the device (Shows Hours, Minutes, Seconds)
Current: Real-time electric current of your device (in Amperes)
Power Factor: The power factor of the appliance connected to it

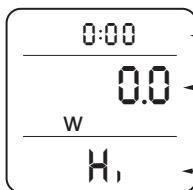
Mode 5: Time/Minimum Power



Cumulative Time
MIN Power

Cumulative Time: How long you have monitored the device (Shows Hours, Minutes, Seconds)
MIN Power: The minimum power recorded during operation (in Watts)

Mode 6: Time/Maximum Power



Cumulative Time
MAX Power

Cumulative Time: How long you have monitored the device (Shows Hours, Minutes, Seconds)
MAX Power: The maximum power recorded during operation (in Watts)

Mode 7: Time/Unit Price



Cumulative Time
Unit Price

Cumulative Time: How long you have monitored the device (Shows Hours, Minutes, Seconds)
Unit Price: The unit price you were setting (For how to set the unit price before using, please refer to the part above " Get Start on Using This Power Monitor")