
USB Portable Diskette Drive

User Manual

NEEDHAM PUBLIC LIBRARY
1139 Highland Avenue
Needham, Massachusetts 02494

33017 01150 5182

1.0 About the USB Portable Diskette Drive

This section contains information about the package contents, using the USB Portable Diskette Drive, and the operating systems it supports.

■ Checking the Shipping items in the package

Match the items in this list with the items in USB Portable Diskette Drive package. If any item is missing or damaged, please contact your purchase.

- 1 x USB Portable Diskette Drive
- 1x CD-ROM for Driver
- 1x User Manual

2.0 Using the USB Portable Diskette Drive

USB Portable Diskette Drive (hereafter called the USB-FDD) is for use with all models of computers that have a USB port. If you are not sure where the USB port on your computer is, refer to the user's manual that comes with your computer.

To use the USB-FDD, you will need to have the device driver for it installed on your computer

Note: When you set up the USB-FDD successfully, a drive letter is assigned to it. Unlike a general diskette drive, it is not always drive A, the drive letter assigned depends on the configuration of the computer you use.

If you are not sure whether this USB-FDD can be connected to your computer, please contact your PC authorized dealer or marketing representative.

■ Operating Systems supported

The USB-FDD can be used with any of the following operating systems:

- Microsoft Windows 98/98SE
- Microsoft Windows 2000 professional
- Microsoft Windows Millennium Edition (ME)
- Microsoft Windows XP

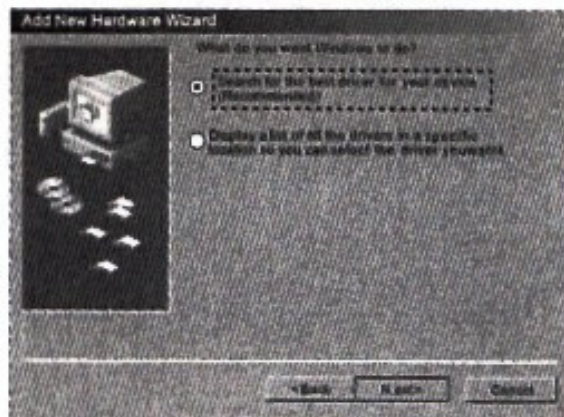
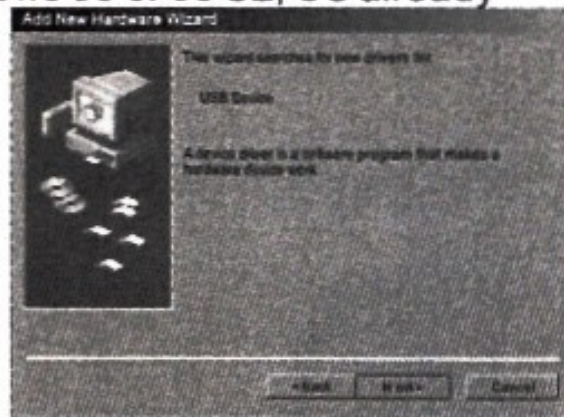
3.0 Installing Driver

■ Installing in Windows 2000, Windows ME and Windows XP

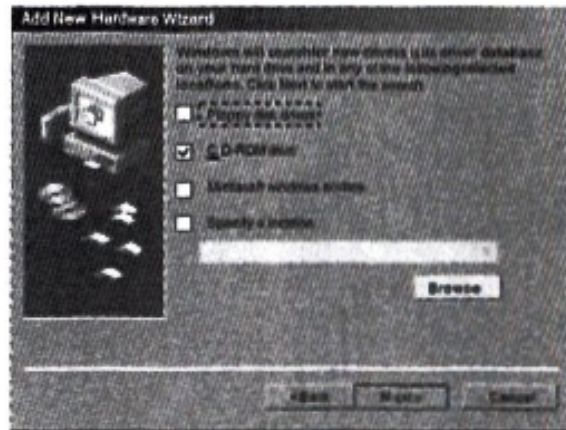
Simply insert the USB cable into the USB port and the operating system will recognize the device.

■ Installing device drivers in Windows 98, Windows 98SE

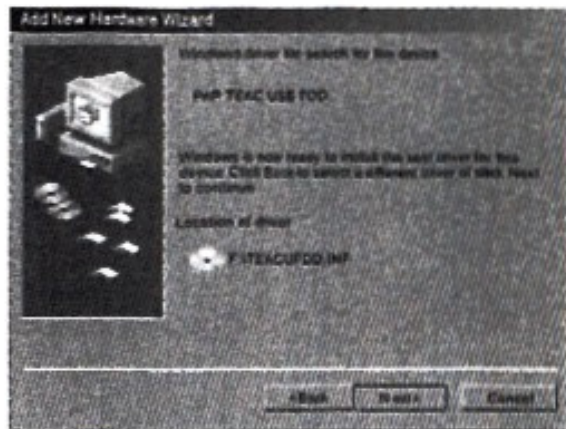
1. Turn on the PC with windows 98 or 98 SE, OS already installed.(Booting).
2. Insert the installation CD into the CD-ROM Drive.
3. After connecting the USB-FDD cable to the USB port, click on the "Next" icon when a right screen appears.
4. Click on the "Next" icon after selecting "search for the best driver for your device (Recommended)" from the screen below.



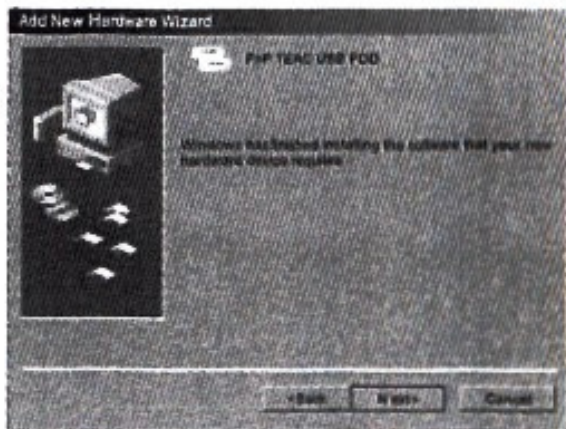
5. Click on the "Next" icon after selecting "CD-ROM drive" from the screen below.



6. Click on the "Next" icon from the screen below.



7. Click on the "Finish" icon when the following screen appears, then the installation is completed.



8. Now, you will see the new USB-FDD Drive in the Windows Explorer.